

# DYNIMPEX



ANACONDA BELTING COMPANY

(A Division of Wildex Limited)

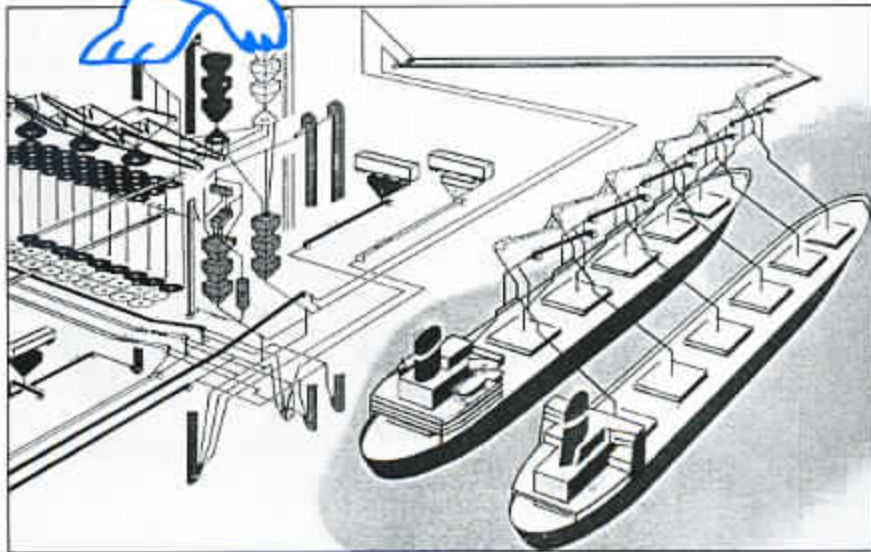
Unit 29 Church Road, Sittingbourne, Kent ME10 3RS

Tel: 01474 709784 Fax: 01474 709896

website: [www.anacondabelting.co.uk](http://www.anacondabelting.co.uk)

e-mail: [sales@anacondabelting.co.uk](mailto:sales@anacondabelting.co.uk)

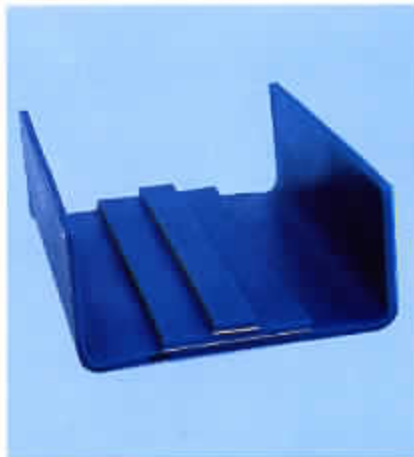
## Sheets and finished products **RHINO HYDE®**



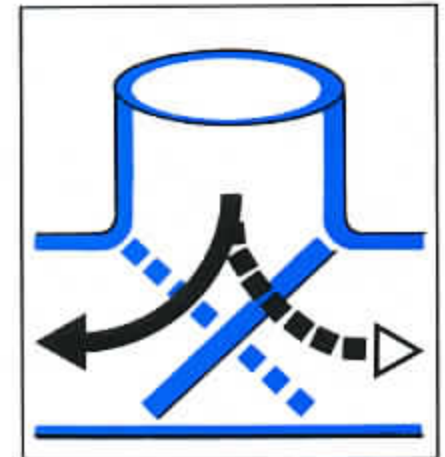
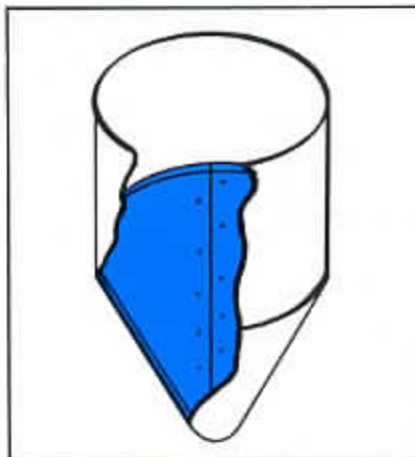
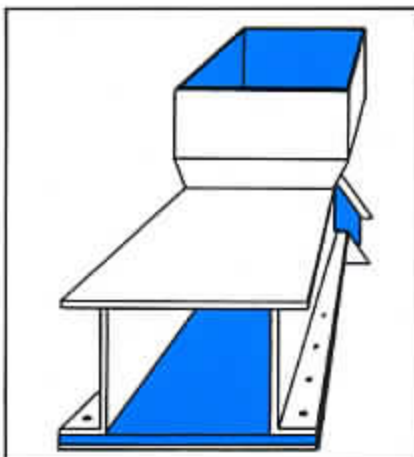
### Rhino Hyde®

- Rhino Hyde® is the famous blue sheet you need to change high wear to low wear. It is the top to resist and fight wear in your bulk handling systems, such as silos, hoppers, pipes, chutes, sizing screens, spouts, cyclones, turn heads, splash skirts.
- There is a Rhino Hyde® recommended for use in the handling of almost any abrasive material. Typical industries include:

- Grain
- Coal
- Taconite
- Sand & Gravel
- Sugar
- Glass
- Manufacturing
- Chemical
- Concrete
- Plastics
- Cement
- Feed
- Wood Pulp
- Fertilizer



- Rhino Hyde® is sound-reducing
- Rhino Hyde®, the wear-resistance is 15 to 20 times better than steel!
- Rhino Hyde® is antistatic
- Rhino Hyde® is FDA approved.





**RHINO HYDE®**

**WHAT WOULD YOU LIKE TO KNOW?**

## Rhino Hyde® Properties

Tensile strength	: 22 N/mm <sup>2</sup>	Cont. operating temp.	: -30/+120°C. max.
Mod. of elast. 100 %	: 7 N/mm <sup>2</sup>	Interm. operating temp.	: 100°C.
Mod. of elast. 300 %	: 14 N/mm <sup>2</sup>	Melting point	: 200°C.
Elongation to rupture	: 400 %	Ignition temperature	: 430°C.
Elasticity	: 12 %	Absorptivity	: Nil
Shore-A hardness	: 85°	Resistance to weak acids and bases	: Excellent
Coefficient of friction	: 0,2	Electrostatic charge	: No spark formation
FDA approved	: yes		

## Delivery program: Rhino Hyde® sheets

type	colour	dimensions	thickness	description	weight	max. temp.
ST/FB	blue	rolls of max. 30 m length 1200 mm width	6,5 mm	standard, with fabric backing for attachment with an adhesive.	± 11 kg/m	80°C
ST/SB	blue	3000x1200mm	8,0 mm	standard type with expanded metal backing.	± 52 kg/sheet	80°C
ST/SB	blue	3000x1200mm	12,5 mm	same.	± 73 kg/sheet	80°C
SBC/SB	blue	3000x1200mm	8,0 mm	same, but with ceramic chips embedded. This combination offers the outstanding abrasion resistance of alumina ceramic with the resiliency and impact resistance of Rhino Hyde®.	± 62 kg/sheet	80°C
ST/SM	blue	3000x1200mm	8,0 mm	with a 2 mm solid metal backing, This is recommended where attachment through the wear surface is undesirable and flexibility is not required. The use of screws from the substrate into the solid metal-backing is the recommended method of attachment.	± 72 kg/sheet	80°C
HG/SB	yellow	3000x1200mm	8,0 mm	standard type for high gliding purposes, less sticking. Has an expanded metal backing. Resistant to damp.	± 52 kg/sheet	60°C
HG/SM	yellow	3000x1200mm	8,0 mm	same, but with 2 mm solid metal backing.	± 72 kg/sheet	60°C
AS/SB	black	3000x1200mm	8,0 mm	special type for improved antistatic properties when needed, with expanded metal backing.	± 52 kg/sheet	80°C
AS/SM	black	3000x1200mm	8,0 mm	same, but with 2 mm solid metal backing.	± 72 kg/sheet	80°C
HS/SB	red	3000x1200mm	8,0 mm	Hydro Hyde® is an abrasion resistant urethane lining designed for use in constant aqueous environments. Hydro Hyde® exhibits superior hydrolytic resistance in addition to outstanding abrasion resistance. With expanded metal backing.	± 52 kg/sheet	100°C
HS/SM	red	3000x1200mm	8,0 mm	same, but with 2 mm solid metal backing.	± 72 kg/sheet	100°C
HT/SB	green	3000x1200mm	8,0 mm	high temperature Rhino Hyde® is designed for dry applications requiring abrasion resistance at elevated temperatures. Recommended operating conditions are from 180°F to 250°F (continuous 100°C), with expanded metal backing.	± 52 kg/sheet	120°C
Rhinox®		2.25 kg		is a 2 compound material with ceramic-granulate in epoxyd. Rhinox® is suitable to repair pipes, discharges, conveyors, distributors, silos, accessories etc.	a = 1,50 kg b = 0,75 kg	130°C

Advice: max. safe speed is abt. 20 m/sec., SBC - 25 m/sec.





# RHINO HYDE®

## INSTALLING suggestions:



Metal-backed Rhino Hyde® sheets may be cut to the desired size and shape using a 1/4" metal shear, power hand saws or hand-operated nibbling tools. Never use high speed circular saws!

Metal-backed Rhino Hyde® can be formed to many complex shapes by hand-forming or through the use of bolts to form the sheets into place.

The minimum diameter for bending the expanded metal-backed sheets is 120 mm. Other operating processes such as drilling, punching and rolling are easily accomplished with hand-operated power tools.

We recommend 8 mm diameter flat head elevator bolts for attaching the metal-backed Rhino Hyde® sheeting to a substrate.

The fasteners should be placed often enough to ensure the liner is firmly attached to the base structure to eliminate vibration and movement.

### WHATEVER YOU LINE, LINE WITH RHINO HYDE®!

Rhino Hyde® urethanes are recommended for use in the handling of almost any abrasive material. Rhino Hyde® properties are:

- **CUT/TEAR RESISTANT.** Far superior to rubber, UHMW-PE and AR steel.
- **ABRASION RESISTANT.** Excellent for sliding abrasion and impingement abrasion.
- **FDA APPROVED** when used as a contact surface handling bulk quantities of dry food.
- **TOUGH BUT RESILIENT.** Absorbs the impact energy of falling large materials. Its resilience acts like a cushion to protect materials from breaking apart or becoming damaged upon impact.
- **LOW COEFFICIENT OF FRICTION** compared to rubber; extremely slick when wet.
- **WIDE TEMPERATURE RANGE.** Has excellent low temperature properties: -40°F to 250°F (-40°C to 120°C).
- **HIGH LOAD-BEARING CAPABILITIES.** Far superior to rubber, metals and other plastics is its ability to absorb energy, sound and vibration, even under heavy loads.
- **CHEMICAL RESISTANCE.** Excellent resistance to oil, aliphatic hydrocarbons, mild acids and bases.
- **HYDROLYTIC STABILITY.** Formulated to resist water absorption and not lose its performance properties. (SB red).
- **NOISE ABATEMENT.** Excellent in its ability to suppress sound.
- **LIGHTWEIGHT** when compared to steel in equal thickness. This makes Rhino Hyde® easy to handle, form and install.
- **EASY INSTALLATION.** Can be attached to a substrate by bolting, gluing and welding.

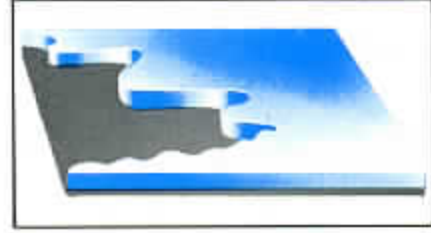




**RHINO HYDE® with Fabric Backing**



**RHINO HYDE® with Solid Metal Backing**



**RHINO HYDE® without backing**



**RHINO HYDE® with Expanded Metal Backing**



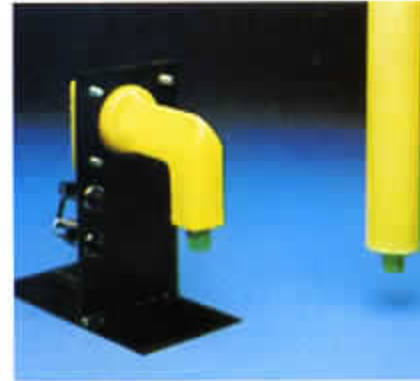
**CERAMIC RHINO HYDE® with Expanded Metal Backing**



**Rhinox® trowellable ceramic**



**Elevator buckets**



**Sensors; low level and high level**



**Cones**



**Sleeves**

**A complete wear-fighting program that will not fail in your workshop!**

- Sheets 3000 x 1200 mm thickness from 6 - 25 mm
- Elevator buckets
- Low level and high level sensors
- Cones for retractable spouts
- Sleeves for chain-conveyors
- Lined pipes
- Trowellable ceramic for instant-repairs

Exclusive stockist: