

KRYPTANE® super abrasion resistant polyurethane liners for minerals, concrete, glass and aggregates handling:

- superior, unequalled life
- suitable for impact and sliding applications
- low stick characteristics, sound reducing
- cost saving fitting methods



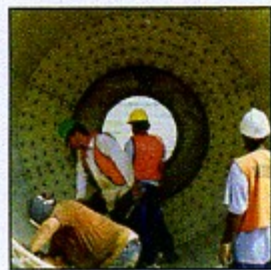
intake hopper



silo and weigh hopper



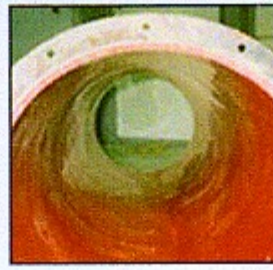
vibrating chute for glass



mixer



chute



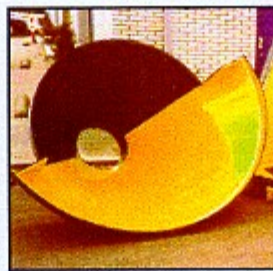
pipe



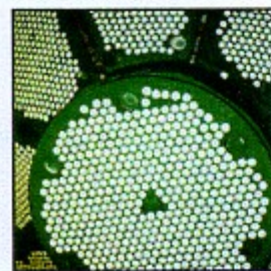
fitting



screw



hopper



Kryptile® Ceramics



pipe



chain conveyor

Product Range:

KRYPTANE® qualities:

YELLOW 59° A shore
Remarkably elastic and impact resistance, outlives the best 40° shore rubbers.

RED 80° A shore
Specially developed for fine-grained products like sand.

GREEN 83° A shore
Outlives the best 60° A shore rubbers, generally usable.

BLACK 93° A shore
Usable in applications with large sharp products.

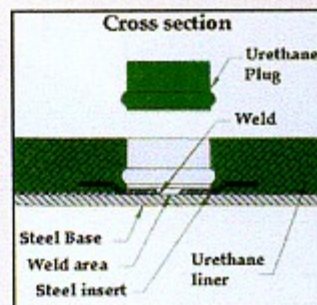
KRYPTILE®
Ceramic in polyurethane, solves extreme abrasion wear problems.

Standard sheet dimensions:

3050 mm x 1220 mm x 6-8-12-18-25-30 mm
other thicknesses and sizes on request.

Types available:

- PL : Plain
- MB : with stretched metal backing 1.5 mm for fitting with 8040 bolts, also stainless
- FB : with textile backing for fitting with glue
- SB : with solid steel base 1.8 mm, also stainless
- RB : with 3.4 mm encasped stretched metal, also stainless.
- DISK : with metal insert.
Optional; thicker steel inserts.



weld-disc with metal insert



bolt type 8040
fitted in countersunk holes

**You've tried the rest
now buy the best**

muller|beltex

Solid partners for powder and bulk handling components