



AUTO-SET MK4

TECHNOLOGY · INNOVATION · QUALITY · VALUE

Radio-Frequency Level Indicator

ATEX-approved for zones 20,21 et 22

DESCRIPTION

The **AUTO-SET MK4** is a radio-frequency level indicator which allows to detect low, medium and high levels on almost all liquid and granular materials, such as powders, grain, sugar, etc...

The **AUTOSET MK4** has a display and can be set up using simple push-buttons and switches to save the settings.

It has a power shield function that enables it to automatically compensate for material build-up on the probe.

CHARACTERISTICS

- Power shield to minimise the affect of material adhering
- Available with 5 probes up to 10 meters.
- Display unit
- IP 65
- Supply 110/230 VAC / 24DC.
- Output contact
- Set-up by push-button.
- Timer delay 0 to 128 seconds variable
- Button fail-safe high/low level
- Sensitivity adjustable by the user

OPTIONS

- Stainless steel version version for the food and pharmaceutical industries: ATS6V0A
- ATEX-extended version: ATS6V0A-300
- Remote version for applications on vibrating elements or high temperatures: ATSR1
- Extra flat / compact version: ATS6V0A-FP

Detailed specification, wiring diagrams and installation/operating instructions available immediately upon request.



ATS6V0A



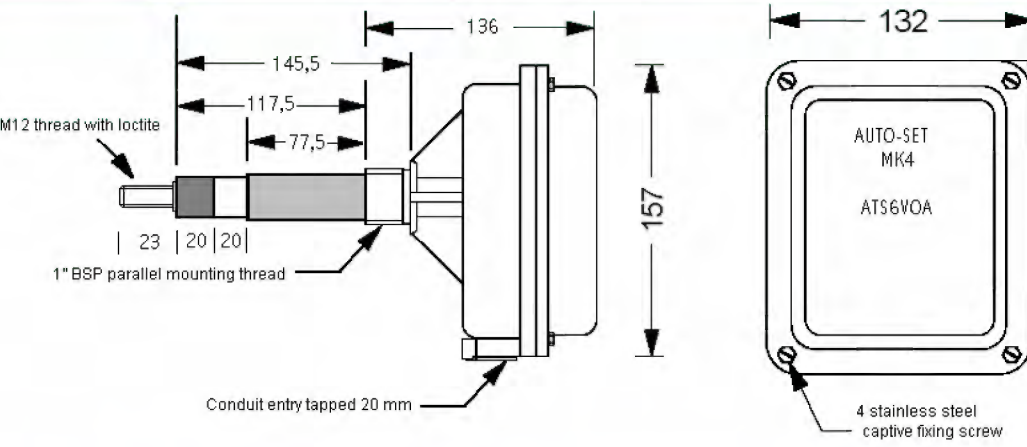
ATEX-approved
Ex II 1D T100°C-IP 65-ZONE 20





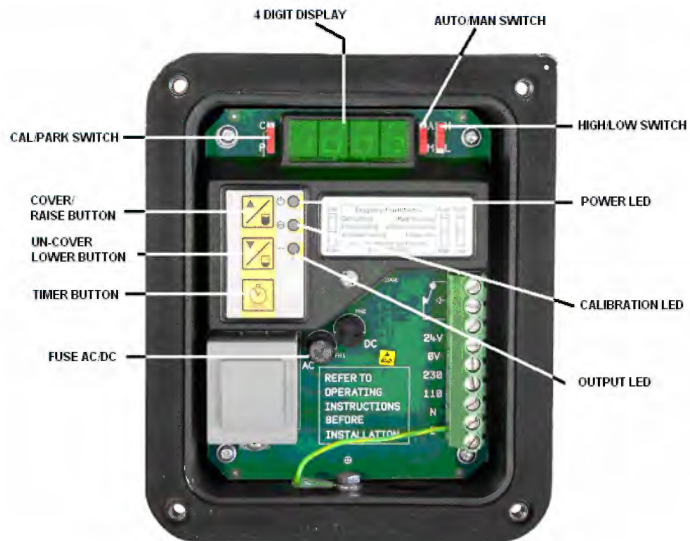
AUTO-SET MK4

TECHNOLOGY · INNOVATION · QUALITY · VALUE

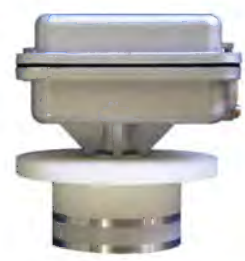


Probes range from 100mm to 1880 mm, with cable up to 10 meters and more

Approvals	Ex II 1D T100°C
Supply	110 / 230 V AC 50/60 Hz or 24 Vdc
Output	2,5 VA
Enclosure	Polyamide 66
IK	08
Protection	IP 65
Mounting	par pas 1" BSP parallèle
Switch high/low	preferred security position (high or low level)
Fuse	5 Amps
Cable entry	min. 1mm ² - max. 4 mm ²
Operating temperature	-20°C to +50°C
Humidity	90%RH
Output	S.P.C.O contacts rated at 2,5A 240 V non-inductive
Time delay	0-128 seconds variable (to prevent wrong signals in case of dirt build-up)



Auto-set FP compact version



Auto-set extended version monitors through walls up to 300 mm thick



Please refer to instruction manual for correct installation. Information subject to change or correction. July 2007.